

CAN A CUDDLY TOY EASE UP THE LIFE WITH DEMENTIA?

... well, the smart one 'PetBot' does!

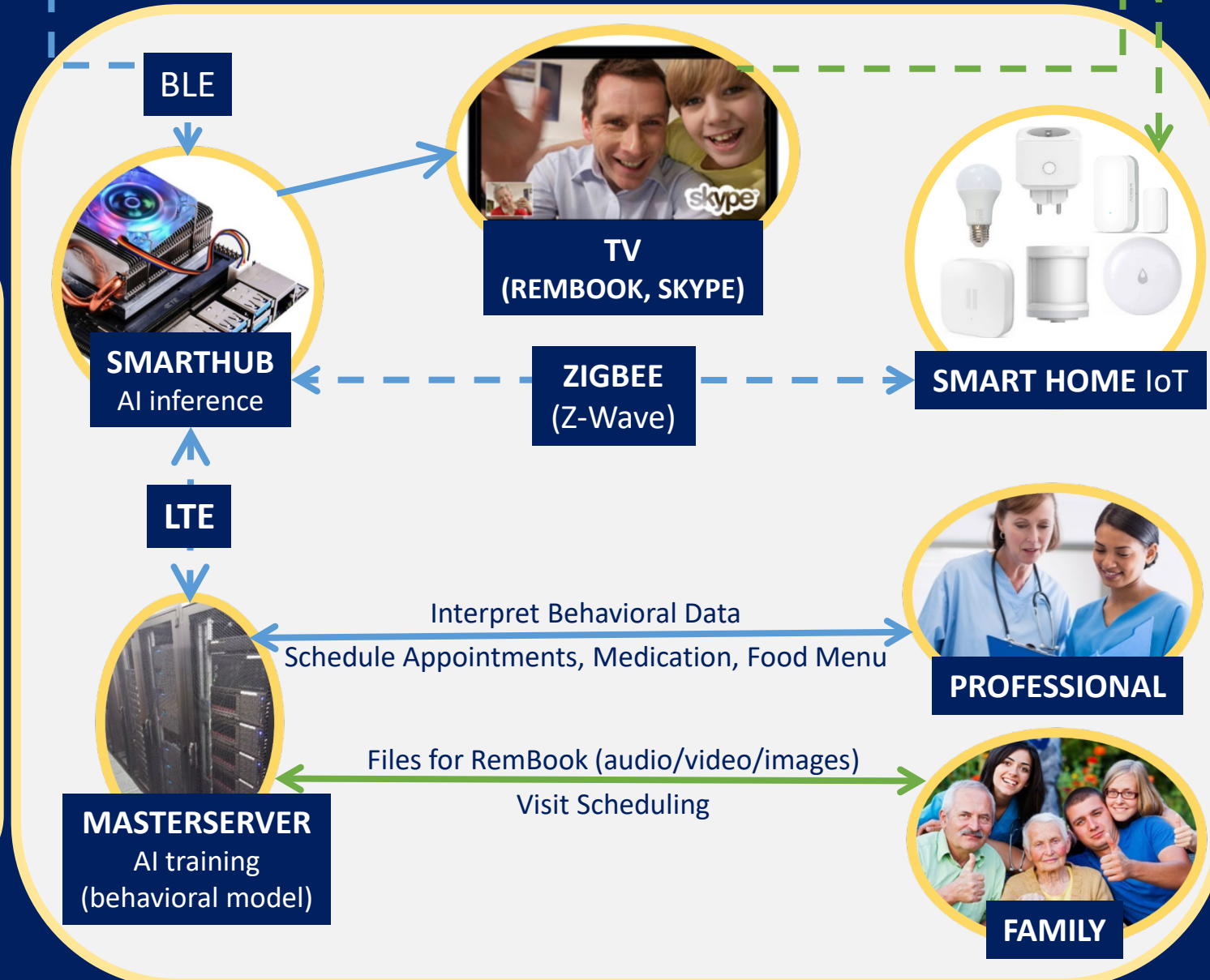
This work responds to niches found in our scoping review

INTERACTION BETWEEN PETBOT AND PWD



PETBOT FEATURES & COMPONENTS

- comforting design
- heat-proof body
- encapsulated
- wireless charging
- low-power
- embedded sensors
- offline speech recognition
- various languages, voices, sounds, animals



OUR SYSTEM AIMS TO BE:

Affordable - Autonomous - Tailored Human-centric AI - PwD inclusive in R&D

Design and implementation Framework of social assistive robotics for people with dementia - a scoping review
Health and Technology, Springer
<https://doi.org/10.1007/s12553-021-00522-0>



Jaroslav Cibulka
jaroslav.cibulka@cvut.cz



Deniz Özdemir



Olga Stepankova



Iva Holmerova



The research presented in this poster was carried out as part of the Marie Curie Innovative Training Network (ITN) action, H2020-MSCA-ITN-2018, under grant agreement number 813196.

